

# 2023 JOINT RESPONSE PLAN ROHINGYA HUMANITARIAN CRISIS

JANUARY - DECEMBER 2023

## KEY FIGURES 2023

**1.52M** PEOPLE IN NEED

50.8% Women & Girls  49.2% Men & Boys

Host communities  
**538k**



Rohingya refugees/FDMNs  
**978k**

**1.47M** PEOPLE TARGETED

50.9% Women & Girls  49.1% Men & Boys

Host communities  
**495k**



Rohingya refugees/FDMNs  
**978k**

**USD 876M** TOTAL REQUIREMENTS



\*This includes 59 appealing partners and 85 implementing partners (of the appealing partners, 28 are implementing activities under other projects).



### Strategic Objective 1

#### Work towards the sustainable and voluntary repatriation of Rohingya refugees/FDMNs to Myanmar.

Facilitate early, voluntary, and sustainable repatriation and reintegration of the Rohingya refugees/FDMNs to Myanmar, and towards that, provide learning opportunities as well as build their skills and capacities to ensure it is commensurate with opportunities in Rakhine State in Myanmar.



### Strategic Objective 2

#### Strengthen the protection of Rohingya refugee/FDMN women, men, girls, and boys.

In close cooperation with the Government of Bangladesh and affected populations, protect individuals and communities, and contribute to an enabling environment respectful of basic rights and well-being of Rohingya refugees/FDMNs.



### Strategic Objective 3

#### Deliver life-saving assistance to populations in need.

Maintain and rationalize services and assistance to ensure equal access for affected populations in need of humanitarian assistance in Cox's Bazar and Bhasan Char. In close cooperation with the Government of Bangladesh and affected populations, enhance preparedness and contingency plans for disaster responses at the Upazila level.



### Strategic Objective 4

#### Foster the well-being of host communities in Ukhiya and Teknaf Upazilas.

In close cooperation with the Government of Bangladesh and affected populations, and in the spirit of mitigating the effects of hosting a large number of Rohingya on the host communities in Ukhiya and Teknaf, facilitate equitable access to quality services for communities; strengthen public service infrastructure and delivery through system and capacity strengthening; support sustainable livelihoods for host communities; and rehabilitate the environment and ecosystem.



### Strategic Objective 5

#### Strengthen disaster risk management and combat the effects of climate change.

In coordination with the Government of Bangladesh, mitigate the adverse impacts on the environment exacerbated by the Rohingya exodus and their prolonged stay in Bangladesh. This will include efforts to restore ecosystems, promote reforestation, develop waste management plans, and may also require efforts to strengthen disaster coordination mechanisms, promote the use of renewable and cleaner energy sources, and train Rohingya refugees/FDMNs and Bangladeshi first responders to respond to the effects of climate change and disaster risks.

## TARGETED POPULATION: ROHINGYA REFUGEES/FDMNS AND HOST COMMUNITY IN UKHIYA AND TEKNAF



# 902,798

51.4% 48.6%  
Women & Girls Men & Boys

**471,673** Children (<18 yrs)  
229,716 girls  
241,957 boys

**395,787** Adults (18-59 yrs)  
218,845 female  
176,942 male

**35,338** Elderly (60+ yrs)  
15,505 female  
19,833 male



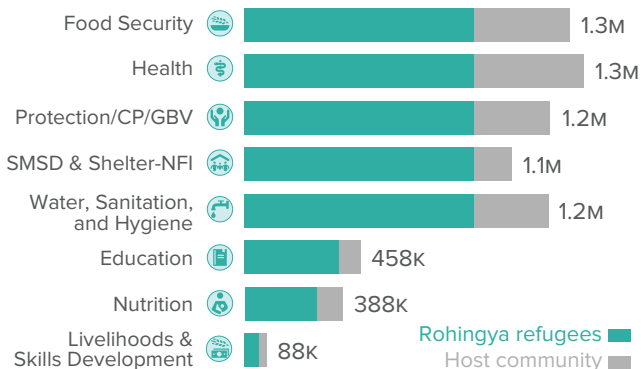
# 495,431

49.8% 50.2%  
Women & Girls Men & boys

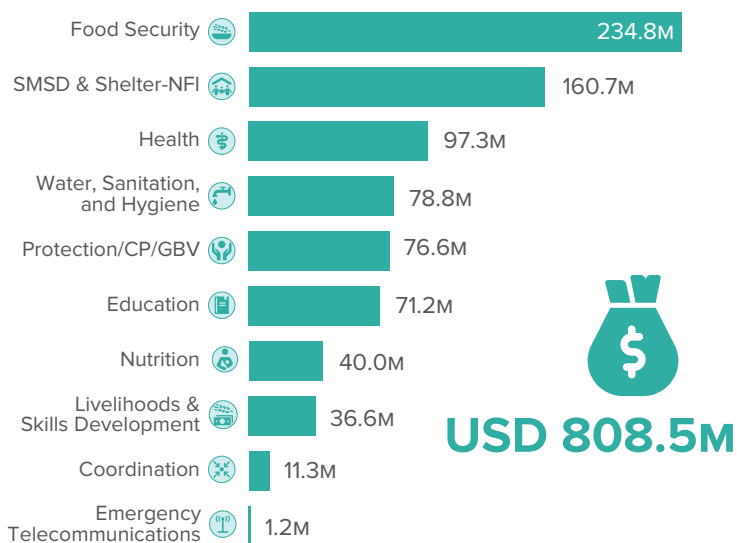
**235,703** Children (<18 yrs)  
115,089 girls  
120,615 boys

**238,714** Adults (18-59 yrs)  
122,988 female  
115,726 male

**21,013** Elderly (60+ yrs)  
8,560 female  
12,454 male



### BREAKDOWN OF PRIORITIZED NEEDS (COX'S BAZAR)



### 2023 JOINT RESPONSE PLAN APPEALING PARTNERS

ACF, ACLAB, Agrajattra, AMAN, Arannayk, BDRCS, BRAC, CAID, CARE, Caritas, CBMG, COAST, CWW, DCA, DRC, Educo, FAO, FiA, FIVDB, Friendship, GH, GUSS, HAEFA, HAI, HAP, HEKS/EPER, HI, HSI, IOM, IRC, IRW, MedGlobal, MSI, Mukti, Nabolok, NGOF, NRC, Oxfam, PARC, Plan, Prantic, Protyyashi, PWJ, RDRS, RPN, SAWAB, SC, TdH, Tearfund, UNDP, UNESCO, UNHCR, UNICEF, UNPFA, UN Women, WFP, WHH, WHO, WVI

\* The Bhasan Char Response is led by the Government of Bangladesh, with the support of UNHCR on behalf of the broader humanitarian community. It is coordinated separately from the Sectors in Cox's Bazar.

\*\* The Government of Bangladesh plans on relocating a total of 100,000 Rohingya refugees/FDMNs to Bhasan Char by the end of 2023. This JRP is appealing to support 75,000 Rohingya refugees/FDMNs on Bhasan Char. Adjustments to the appeal will be made, if required, based on the actual number of Rohingya refugees/FDMNs on Bhasan Char.

## TARGETED POPULATION: ROHINGYA REFUGEES/FDMNS IN BHASAN CHAR\*



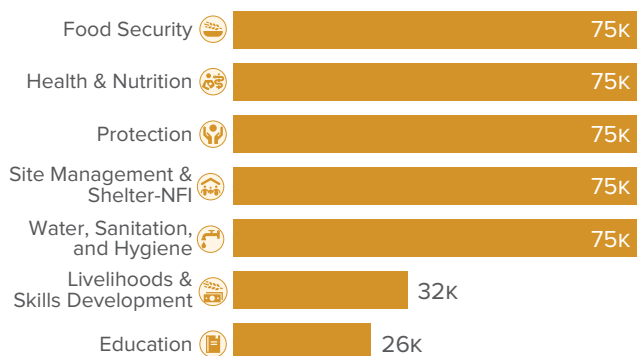
# 75,000\*\*

51.3% 48.7%  
Women & Girls Men & boys

**41,107** Children (<18 yrs)  
20,277 girls  
20,237 boys

**32,237** Adults (18-59 yrs)  
17,486 female  
14,751 male

**1,656** Elderly (60+ yrs)  
680 female  
976 male



### BREAKDOWN OF PRIORITIZED NEEDS (BHASAN CHAR)

